

MAIN FEATURE

1. Switching current up to 25A.
2. P.C.Board & Plug-in Terminal available.
3. Employment of suitable plastic materials to be applied to high temperature and various chemical solutions.
4. Halogen Free series available.
5. UL Class F insulation available.
6. Comply with RoHS and REACH regulations.

CONTACT RATING

Load Type	GI (DM)
Rated Load (Resistive)	TÜV: 25A 277VAC UL: 23A 277VAC
Rated Carrying Current	25A
Max. Allowable Voltage	AC 277V
Max. Allowable Current	25A
Max. Allowable Power Force	6,925VA
Contact Material	Ag Alloy
Contact Form	SPST

APPLICATION

Domestic and Industrial Appliances, General Control etc...

PERFORMANCE (AT INITIAL VALUE)

- Contact Resistance 100 mΩ Max.@1A,6VDC
- Operate Time.....20 mSec. Max.
- Release Time 10 mSec. Max.
- Dielectric Strength:
 - Between Coil & Contact.....4,000VAC at 50/60 Hz for one minute
 - Between Contacts 1,000VAC at 50/60 Hz for one minute
- Surge Strength 10,000V (between Coil & Contact 1.2x50μSec.)
- Insulation Resistance 100 MegaΩ Min. at 500VDC
- Max. On/Off Switching:
 - Electrical6 Cycles per Minute
 - Mechanical.....300 Cycles per Minute
- Temperature Range-20~+85°C
- Humidity Range45~85% RH.
- Coil Temperature Rise 55°C Max.

- Vibration:
 - Destruction 10 to 55 to 10 Hz,0.75 mm single amplitude (1.5mm double amplitude)
 - Malfunction 10 to 55 to 10 Hz,0.75 mm single amplitude (1.5mm double amplitude)
- Shock:
 - Destruction 1,000 m/S²
 - Malfunction 100 m/S²
- Life Expectancy:
 - Mechanical 10⁷ Operations at No Load condition
 - Electrical 10⁵ Operations at Rated Resistive Load
- Weight About 26.6 g

SAFETY STANDARD & FILE NUMBER

- UL & C-UL..... E141060
- TÜV R50191690

COIL SPECIFICATION (AT 20°C)

Coil Sensitivity	Nominal Voltage (VDC)	Nominal Current (mA)	Coil Resistance ($\Omega \pm 10\%$)	Power Consumption (W)	Pull-In Voltage (VDC)	Drop-Out Voltage (VDC)	Maximum Allowable Voltage (VDC)
GI	6	150	40	Abt. 0.9	70% Maximum	10% Minimum	110%
	12	75	160				
	24	37.5	640				
	48	18.8	2,560				

ORDERING INFORMATION

GI - S - 1 12 D M F H F

Insulation System: Nil: Class B
F: Class F

Contact Rating: H: TÜV 25A/277VAC
UL 23A/277VAC

Terminal Type: F: With PC Board & Plug-in Terminal
P: PC Board Terminal Only

Contact Form: M: One Form A

Coil type: D: Standard DC

Coil Voltage: 06: 6V, 12: 12V, 24: 24V, 48: 48V

Number of Pole: 1: One Pole

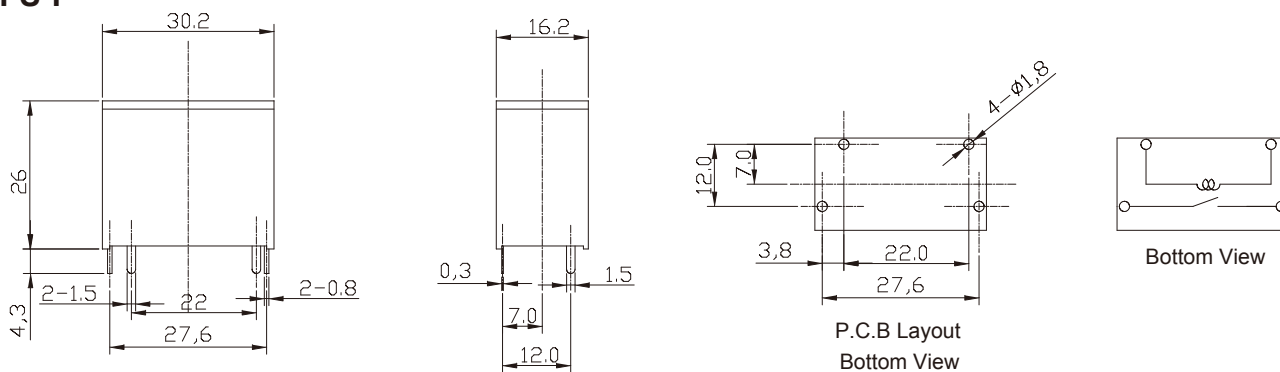
Type of Sealing: S: RT I Dust Protected
GI

CLASSIFICATION

Model	GI	
Terminal Type	PC Board Terminal Only	With PC Board & Plug In Terminal
Contact Rating	TÜV 25A/277VAC UL 23A/277VAC	TÜV 25A/277VAC UL 23A/277VAC
Hand Soldered Type	GI-S-1□□DMPH	GI-S-1□□DMFH

DIMENSION ($\leq 5\text{mm} \pm 0.2\text{mm}$, $> 5\text{mm} \pm 0.3\text{mm}$, the tolerance of PCB thru hole: $+0.1\text{mm}$)

GI-S-P



GI-S-F

