



MAIN FEATURE

- 1 Pole and 2-Poles versions available with high switching current up to 30A.
- Plug-in Terminal with Flanged Case is available for customer's various applications.
- Both AC and DC coil available.
- LED version available.
- Touch Button and LED version available.
- Comply with RoHS and REACH regulations.

CONTACT RATING

Load Type	RP-2P	RP-3P	RPT (No Common)	RPT-2P	RPT- 3P
Rated Load (Resistive)	10A 240VAC	10A 240VAC	30A/28VDC	20A/15VDC	20A/15VDC
	13A 120VAC	13A 120VAC	30A/120VAC	13A/28VDC	13A/28VDC
	13A 28VDC	13A 28VDC	30A/240VAC	25A/120VAC	20A/120VAC
	-	-	10A/600VAC	25A/240VAC	15A/240VAC
	-	-	-	5A/600VAC	-
Contact Capacity	1/2HP 240VAC	1/2HP 240VAC	1HP/120VAC	3/4HP/120VAC	1/2HP/120VAC
	1/3HP 120VAC	1/3HP 120VAC	1 HP/200~600VAC	1HP/240/480/600VAC	1/2HP/208/240VAC
Rated Carrying Current	13A	13A	30A	25A	20A
Max. Allowable Voltage	AC 300V	AC 300V	AC 600V	AC 600V	AC 300V
	DC 48V	DC 48V	DC 28V	DC 28V	DC 28V
Max. Allowable Current	13A	13A	30A	25A	20A
Max. Allowable Power Force	2,400VA	2,400VA	7,200VA	6,000VA	3,600VA
	364W	364W	840W	364W	364W
Contact Material	Ag Alloy	Ag Alloy	Ag Alloy	Ag Alloy	Ag Alloy
Contact Form	DPST, DPDT	3PST, 3PDT	SPST, SPDT	DPST, DPDT	3PST, 3PDT

APPLICATION

Vending Machine, Cooking Appliances, Office Machine, Domestic Appliances, Control Equipment, etc

PERFORMANCE (AT INITIAL VALUE)

- Contact Resistance 100 mΩ Max. @1A,6VDC
- Operate Time 15 mSec. Max.
- Release Time 10 mSec. Max.
- Dielectric Strength:
 - Between Coil & Contact 1,500VAC at 50/60 Hz for one minute
 - Between Contacts 1,000VAC at 50/60 Hz for one minute
- Surge Strength 1,500V (between Coil & Contact 1.2x50μSec.)
- Insulation Resistance 100 MegaΩ Min. at 500VDC
- Max. On/Off Switching:
 - Electrical 6 Cycles per Minute
 - Mechanical 300 Cycles per Minute
- Temperature Range -45~+70°C
- Humidity Range 45~85% RH.
- Coil Temperature Rise 50°C Max.
- Vibration:
 - Destruction 10 to 55 to 10 Hz, 0.75 mm single amplitude (1.5mm double amplitude)
 - Malfunction 10 to 55 to 10 Hz, 0.75 mm single amplitude (1.5mm double amplitude)
- Shock:
 - Destruction 1,000 m/S²
 - Malfunction 100 m/S²
- Life Expectancy:
 - Mechanical 10⁷ Operations at No Load condition
 - Electrical 10⁵ Operations at Rated Resistive Load
- Weight About 85 g

ACCESSORIES & SOCKETS

- PPF-11A/AE See Page 170

SAFETY STANDARD & FILE NUMBER

- RPT
- UL & C-UL E175730
- RP
- NIL.

COIL SPECIFICATION (AT 20 °C)

Coil Sensitivity	Coil Voltage Code	Nominal Voltage (VAC/VDC)	Nominal Current (mA)		Coil Resistance (Ω±10%)	Power Consumption	Pull-In Voltage	Drop-Out Voltage	Max. Allowable Voltage
			50HZ	60HZ					
RP/RPT 1P, 2P AC Coil	01	6	309.1	261.5	4.2	Abt. 2.9~3.5VA	85% Maximum	15% Minimum	110% Maximum
	02	12	200.2	169.4	18				
	03	24	129.7	109.7	72				
	06	120	28.0	24.3	1,700				
	08	240	13.2	11.3	7,200				
RP/RPT 3P AC Coil	01	6	371.4	317.3	3.2	Abt. 3.8~4.6VA	85% Maximum	15% Minimum	110% Maximum
	02	12	253.3	216.4	14				
	03	24	172.8	147.6	55				
	05/06	120	37.7	32.0	1,300				
	08	240	16.6	13.9	5,510				
RP/RPT DC Coil	02	12	100.0		120	Abt. 1.2 W	80% Maximum	10% Maximum	110% Maximum
	03	24	50.8		472				
	04	48	26.7		1,800				
	05	110	11.0		10,000				
	06	120	12.0		10,000				

ORDERING INFORMATION

RPT - N 01 D M S F L T D

Diode: Nil: Without Diode

D: With Diode Selection

Test Button: Nil: Without Test Button

T: With Test Button

LED: Nil: Without LED

L: With LED Selection

Case Type: Nil: Standard Square Shape Case

F: Top with Flanged Case

H: Side with Flanged Case

Terminal Type: **S:** Quick Contact Tabs (width 4.80mm)

W: Quick Contact Tabs (width 6.50mm)

Contact Form: Nil: Form C

M: Form A

B: Form B

Coil Type: **D:** Standard DC

A: Standard AC

Coil Code: **01:** 6V, **02:** 12V, **03:** 24V, **04:** 48V,

05: 110V, **06:** 120V, **08:** 240V

Number of Pole: **1:** 1 Pole

2: 2 Poles

3: 3 Poles

Type: **RP**

RPT

CLASSIFICATION

Model	RP/RPT		
Coil Type	AC		
Contact Form	1 Pole	2 Poles	3 Poles
Number of Poles	1A / 1B	2C / 2A / 2B	3C / 3A / 3B
Terminal Type	RP(T)-N□□AS/AMS/ABS RP(T)-N□□AW/AMW/ABW	RP(T)-2□□AS/AMS/ABS RP(T)-2□□AW/AMW/ABW	RP(T)-3□□AS/AMS/ABS RP(T)-3□□AW/AMW/ABW
Case Type	RP(T)-N/2/3□□ASH/AMSH/ABSH RP(T)-N/2/3□□ASF/AMSF/ABSF	RP(T)-N/2/3□□AWH/AMWH/ABWH RP(T)-N/2/3□□AWF/AMWF/ABWF	
LED	RP(T)-N/2/3□□ASFL/AMSFL/ABSFL RP(T)-N/2/3□□AWFL/AMWFL/ABWFL		
Touch Button	RP(T)-N/2/3□□ASLT/AMSLT/ABS LT RP(T)-N/2/3□□ASFLT/AMSFLT/ABSFLT RP(T)-N/2/3□□AWFLT/AMWFLT/ABWFLT		
Diode	RP(T)-N/2/3□□ASFLTD/AMSFLTD/ABSFLTD RP(T)-N/2/3□□AWFLTD/AMWFLTD/ABWFLTD		

Model	RP/RPT		
Coil Type	DC		
Contact Form	1 Pole	2 Poles	3 Poles
Number of Poles	1A / 1B	2C / 2A / 2B	3C / 3A / 3B
Terminal Type	RP(T)-N□□DS/DMS/DBS RP(T)-N□□DW/DMW/DBW	RP(T)-2□□DS/DMS/DBS RP(T)-2□□DW/DMW/DBW	RP-3□□DS/DMS/DBS RP-3□□DW/DMW/DBW
Case Type	RP(T)-N/2/3□□DSH/DMSH/DBSH RP(T)-N/2/3□□DSF/DMSF/DBSF	RP(T)-N/2/3□□WH/DMWH/DBWH RP(T)-N/2/3□□DWF/DMWF/DBWF	
LED	RP(T)-N/2/3□□DSFL/DMSFL/DBSFL RP(T)-N/2/3□□DWFL/DMWFL/DBWFL		
Touch Button	RP(T)-N/2/3□□DSLTD/DMSLTD/DBSLTD RP(T)-N/2/3□□DSFLT/DMSFLT/DBSFLT RP(T)-N/2/3□□DWFLT/DMWFLT/DBWFLT		
Diode	RP(T)-N/2/3□□DSFLTD/DMSFLTD/DBSFLTD RP(T)-N/2/3□□DWFLTD/DMWFLTD/DBWFLTD		

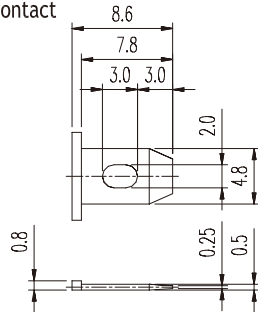
ACCESSORIES & SOCKETS

RP & RPT

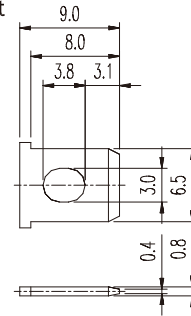
- PPF-11ASee Page 170
- PPF-11AESee Page 170

TERMINAL DIMENSIONS ($\leq 5\text{mm} \pm 0.2\text{mm}$, $> 5\text{mm} \pm 0.3\text{mm}$, the tolerance of PCB thru hole: $+0.1\text{mm}$)

**.189" (4.8mm)
Quick Contact**

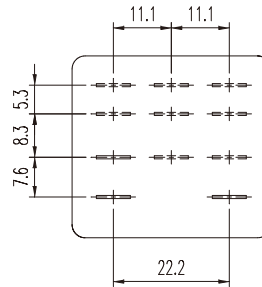
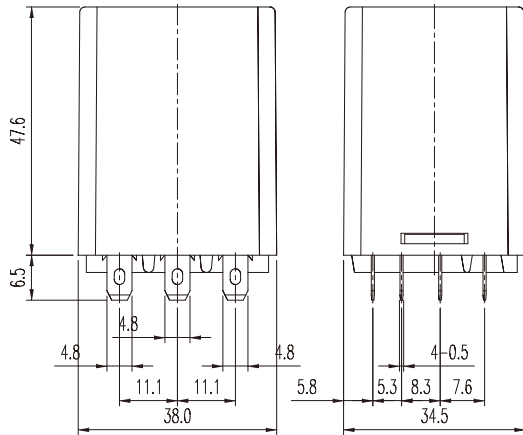


**.256" (6.5mm)
Quick Contact**

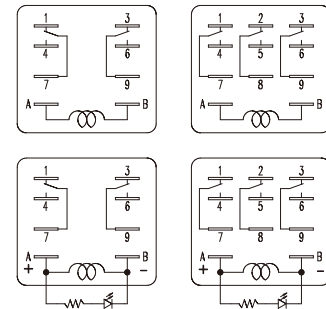


DIMENSION ($\leq 5\text{mm} \pm 0.2\text{mm}$, $> 5\text{mm} \pm 0.3\text{mm}$, the tolerance of PCB thru hole: $+0.1\text{mm}$)

RP

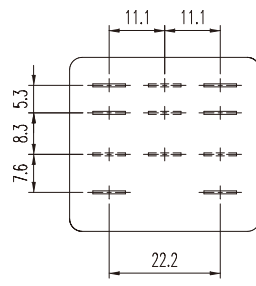
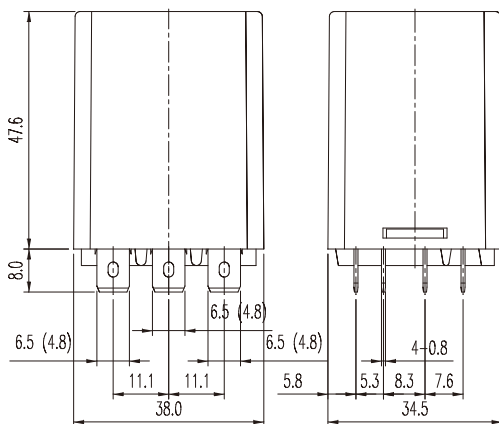


**P.C.B. Layout
Bottom View**

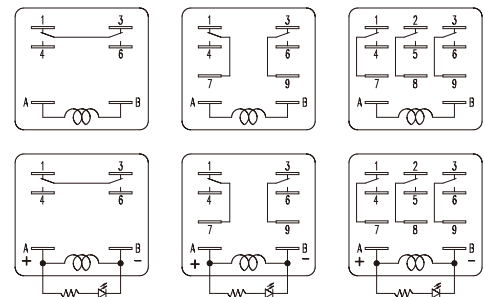


Bottom View

RPT



**P.C.B. Layout
Bottom View**



Bottom View